



Broadband support to connect the whole Vermont community.

EQUAL ACCESS TO BROADBAND INC

HOLLY GROSCHNER, CHAIR

DELEGATE, ECFIBER

29 JAN 2021

412.445.0030

Hurray! We all agree!
everyone needs broadband
But how?

Reduce the price.

Retail broadband prices don't work for low-income Vermonters.

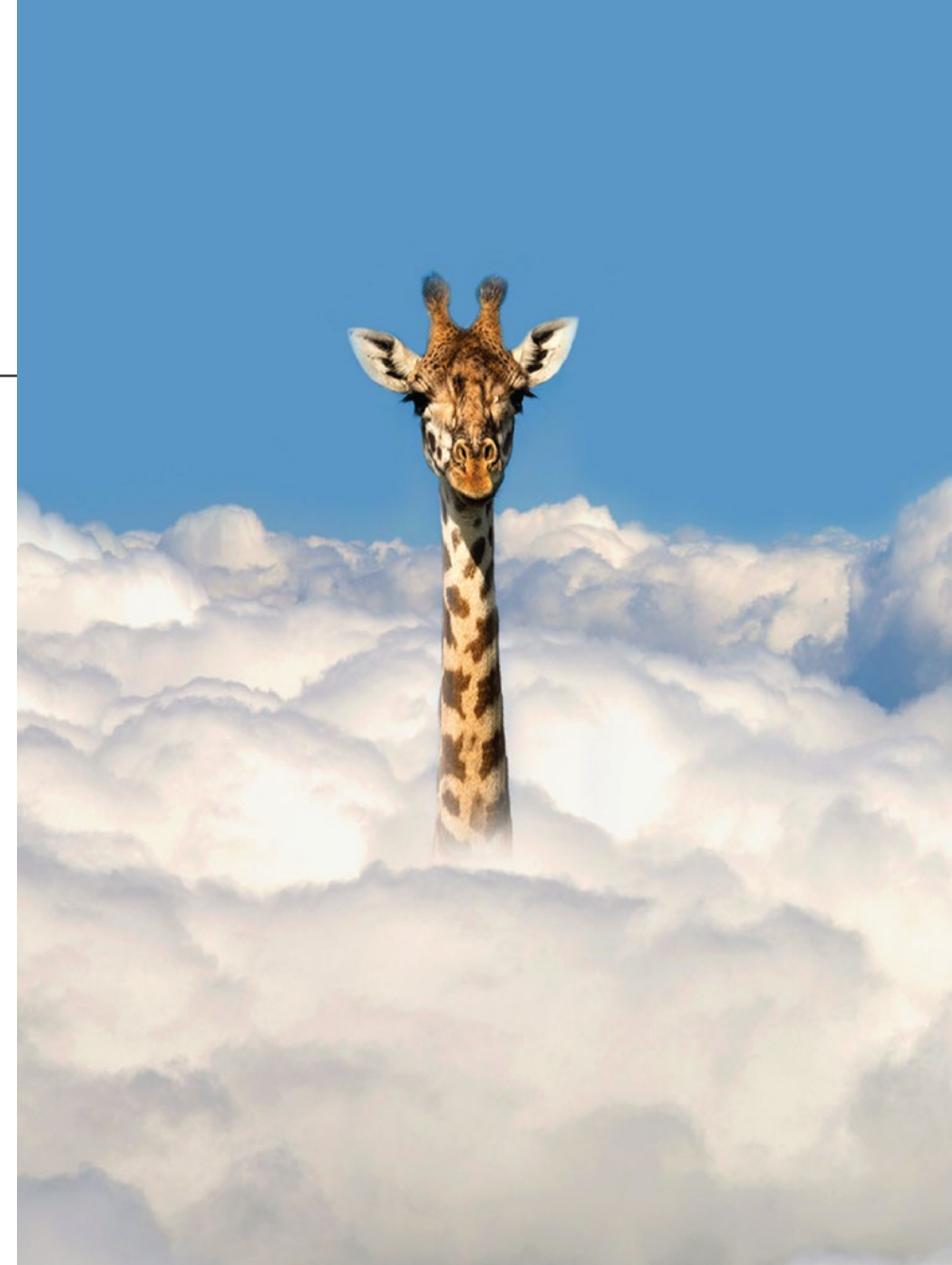
The retail price doesn't subsidize low-income customers.

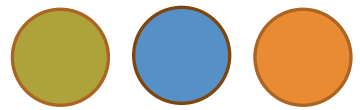
Congress may save the day for some: \$3.2B Emergency Broadband Benefit

FCC must Expedite – what process is easy for existing carriers?

The target \$20/mo (up to a \$50 subsidy)

Existing Carriers: More services x Lifeline System direct = more customer \$





Equal Access to Broadband Inc.

New nonprofit - created at the request of ECFiber

Part of the municipal broadband mission: serve all the neighbors

Subsidizing qualified customers in Communications Union Districts

Supporting social services providers as they help families get access

Subsidized service model: 25mbps square for \$22 - standard

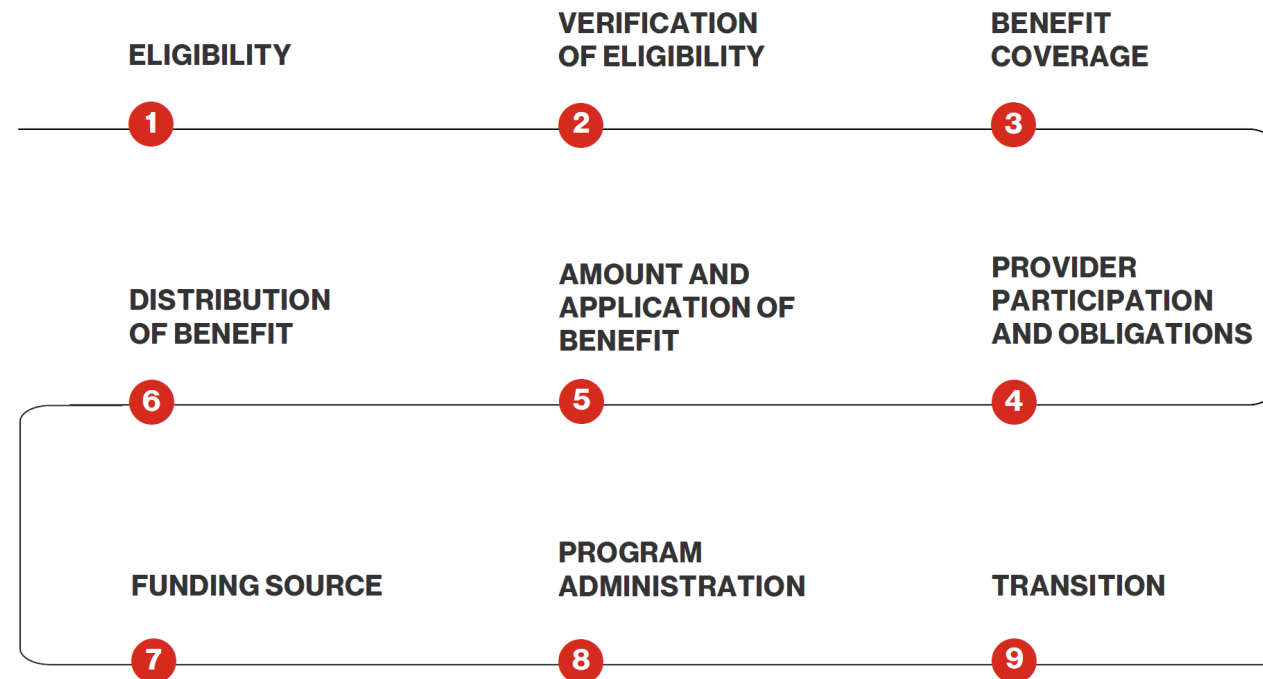
Self-funded by CUDs + philanthropy + government grants

Barnard.Bethel.Bradford.Braintree.Brookfield.Chelsea.Corinth.Fairlee.Granville.Hancock.Hartford.Newbury.Norwich. Pittsfield. Pomfret.Randolph.Reading.Rochester.Royalton.Sharon.Stockbridge.Strafford.Thetford.Topsham.Tunbridge.Vershire.Washington. West Fairlee.West Windsor.Windsor.Woodstock. More information about ECFiber at www.ecfiber.net.

The national funding process looks like this to national carriers:

Costs* fall on the individual, caseworkers and government (local, state and federal)

*time and money for registration, benefit administration and education.



But, for folks in VT who need broadband now, and people who help them, the process looks like this:



WHERE: Your home location determines what service is available, if any. But who lets you know?



QUALIFY: Carriers determine who and how to sign up - online: prior payment history, service type and federal benefits



WAIT: Carrier and Landlord approvals, federal benefit or EBT, social service agencies, and connection "drops."



TECH REFRESH: Who tells me what I need to make this thing work? Teachers? Social workers? The kids?



FINANCIAL MANAGEMENT
cost of devices + additional monthly recurring cost + fear



CUDs = custom community service

1. Frictionless registration - EAB supports free CUD access to National Verifier database
2. EAB outreach: Support existing channels - schools and caseworkers
3. Set standards that expand eligibility - school lunch, exceptions to fed poverty level
4. EAB and CUDs fund customer "drops" - through donations
5. EAB creates reserves for accounts in arrearage - no unplanned disconnects
6. EAB facilitates equipment distribution program - to make access real
7. EAB provides digital education: how to connect + maximize savings using 25mbps

EAB Administration, Support & Education: \$350,000

School in your car is not the answer. Equal Access to Broadband brings affordable access home.





Community + funding =
Affordability.

Please support the EAB
access process. Thanks.

EQUAL ACCESS TO BROADBAND INC

HOLLY GROSCHNER, CHAIR

DELEGATE, ECFIBER

29 JAN 2021

412.445.0030